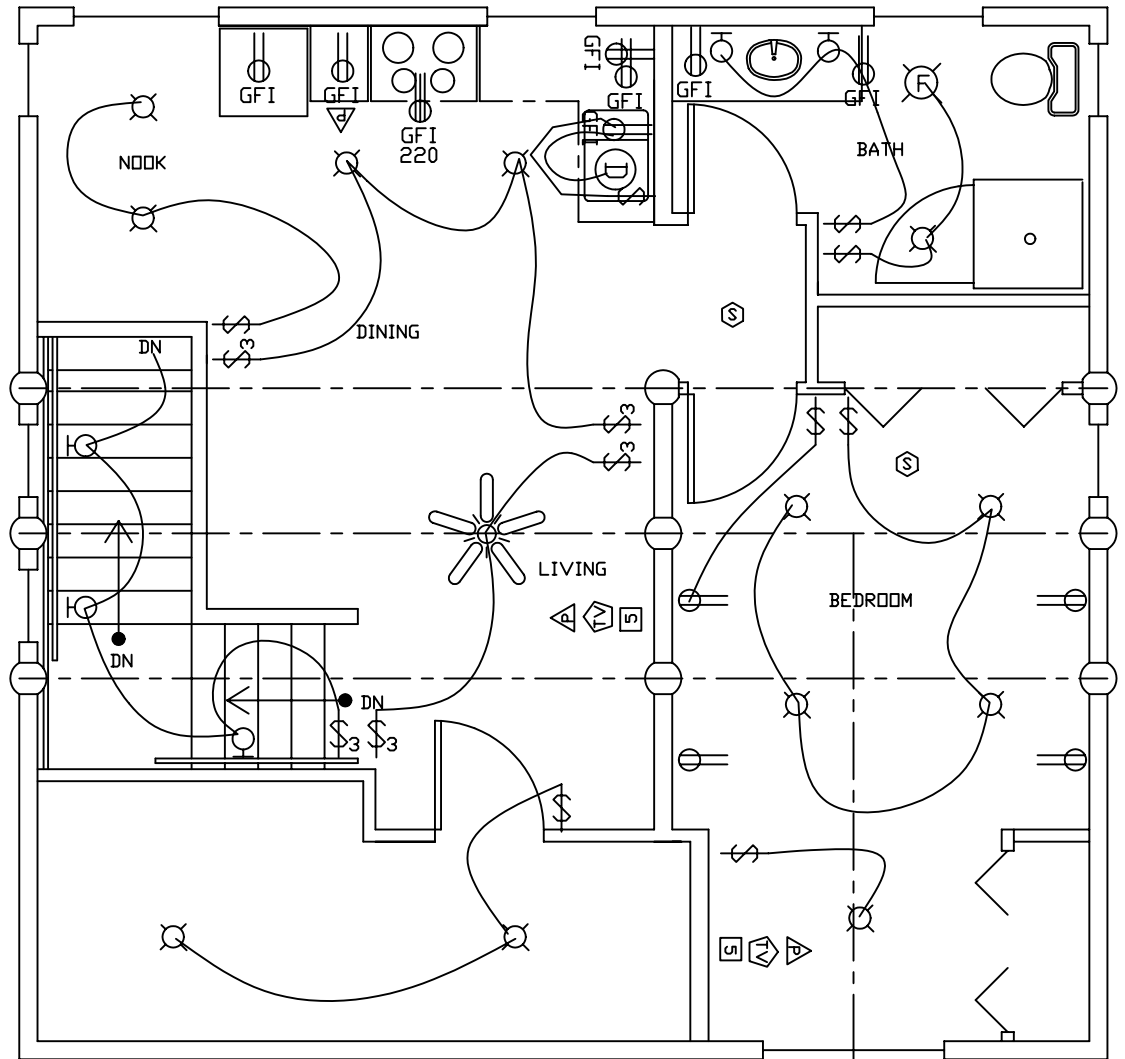


ELECTRICAL INSTRUCTIONS

ELECTRICAL LEGEND	
	CEILING FAN w/ LIGHTS
	CEILING LIGHTS
	WALL LIGHTS
	UNDER CABINET HALOGEN SPOTS
	CEILING LIGHTS w/ FAN
	OUTLET
	OUTLET - CEILING MOUNT
	OUTLET - FLOOR MOUNT
	GFI OUTLET
	WATERPROOF GFI OUTLET
	220V GFI OUTLET
	SWITCH
	DIMMER SWITCH
	3 WAY SWITCH
	SINK DISPOSAL
	SMOKE DETECTOR
	SMOKE DETECTOR - WALL MOUNT
	PHONE
	TV/CABLE
	TV/CABLE - FLOOR MOUNT
	CAT 5 COMPUTER
	GARAGE DOOR OPENER
	ELECTRIC WALL HEATER
	ELECTRICAL PANEL



Create your electrical diagram based on where you want specific types of lights, fans and outlets.

Treehouse Log Homes will ensure the plan meets Uniform Building Codes and make sure to go over options with you that you may want for future use. Planning all the electrical now is more economical than trying to add additional outlets or run additional wiring you may want in the future.

1. Take your blank floor plans and start by placing lights where you need them. Decide if you want wall mounts, ceiling mounts, or suspended lighting from log beams.
2. Then decide where you want those lights to be turned on from. A 3-way Switch allows you to turn on a set of lights from more than one location. In the above example you will notice the ceiling fan can be turned on from the top of the stairs and when coming out of the bedroom.
3. Next, place outlets, phone, TV, and computer lines where you need them. Also note any outlets you would like to be operated by a switch. In the example, the bedroom has a switch at the door that operates an outlet for lamp lighting.
4. Finally, add any specific features or requirements that you need.

From there, we will make sure that code is met. For example, each bedroom requires a smoke detector and a common smoke detector in the hallway outside the bedrooms. We will go over the electrical plan with you and create the final plan that will be included with your log home plans.

E 1

CUSTOM HAND CRAFTED
LOG HOMES

ELECTRICAL
INSTRUCTIONS

DATE:	1/01/2005
DRAWN BY:	DAVID HOLMES
REVISED:	
REVISION #:	
REVISED BY:	
PLAN #	
APPROVED:	
SCALE:	1/4" = 1'
FILE:	F:\dsh\log\electrical\instructions.dwg

Log Homes of the Northwest
Treehouse

1126 EDGEWATER ST. NW. SALEM, OREGON 97304
1.877.284.5356 - 503.581.1948 fax - CCB# 143242
www.TreehouseLogHomes.com - Info@TreehouseLogHomes.com